



CHAKRI PALACE
ROYAL THAI CUISINE



IMPERIAL CHAKRI PALACE

Sawadeeka



Chakri Palace was founded in 1999 in our quest to bring the finest Thai cuisine to Malaysia. 'Chakri' represents the current ruling royal house of Thailand; 'Palace' allows guests to experience the exquisite taste of Thai cuisine like royalty.

Together with a team of award winning Thai chefs including our head cook who was formerly from the Royal Palace, we welcome you to enjoy the best of Thai cuisine with us.

At Chakri Palace, we pride ourselves in caring for our guests, serving only the freshest organic produce with **low cholesterol cooking oil, no added MSG or artificial preservatives.**

Taking inspiration from 'The Principles of Thai Cookery' by Thai food expert and celebrity **Chef McDang**, we have created a new variety of signature dishes, adding a refreshing twist to traditional favourites.



Chef McDang



MC DANG SPECIALTIES

| | | |
|----|---|---------|
| M1 | Clear Tom Yum with Seabass | 19.9 |
| M2 | Phad Thai Noodles with King Prawn | 39.9 |
| M3 | Green Curry Crab Meat with Mee Hoon | 29.9 |
| M4 | Lobster with Sweet and Chili/Butter Sauce | 45/100g |





 Mieng Kham 



APPETIZER

| | | |
|----|------------------------|------|
| A1 | Chakri Four Seasons | 39.9 |
| A2 | Mieng Kham | 24.9 |
| A3 | Spring Roll | 12.9 |
| A4 | Thai Fish Cake | 23.9 |
| A5 | Thai Prawn Spring Roll | 23.9 |
| A6 | Spicy Chicken Wings | 18.9 |
| A7 | French Fries | 10.9 |
| A8 | Nachos | 23.9 |
| A9 | Spicy Ikan Bilis | 17.9 |



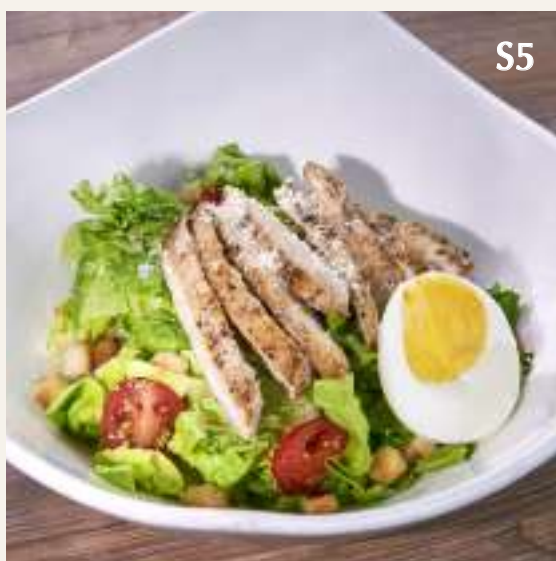


Thai Mango Salad with Catfish



SALAD

| | | |
|----|---------------------------------------|------|
| S1 | Thai Mango Salad | 21.9 |
| S2 | Thai Mango Salad with Catfish | 22.9 |
| S3 | Thai Mango Salad with Soft-Shell Crab | 33.9 |
| S4 | Glass Noodle Salad | 29.9 |
| S5 | Caesar Salad | 19.9 |





King Prawn Tom Yum

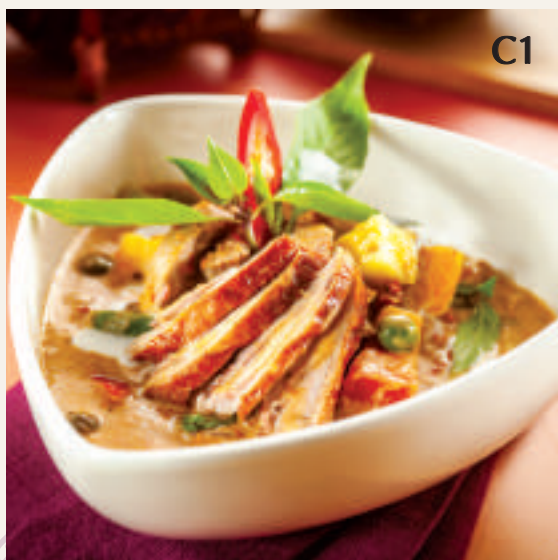


TOM YUM

| | | |
|----|-----------------------------------|------|
| | Chakri Tom Yum Soup (Clear/Red) | |
| T1 | Seafood Tom Yum | 25.9 |
| T2 | King Prawn Tom Yum | 33.9 |
| T3 | Tom Yum Chicken with Coconut Milk | 19.9 |

THAI CURRY

| | | |
|----|------------------------------|------|
| | <u>Red Curry</u> | |
| C1 | Signature Roast Duck | 30.9 |
| | <u>Green Curry</u> | |
| C2 | Chicken / Beef / Prawn | 29.9 |
| | <u>Thai Red Peanut Curry</u> | |
| C3 | Chicken / Beef / Prawn | 29.9 |





Steamed Seabass with Lime & Chili



FISH

- F1 Steamed Seabass with Lime & Chili Sauce 95.9
- F2 Deep Fried Seabass with Mango Sauce 95.9
- F3 Deep Fried Garoupa with Samrod Sauce 95.9
- F4 Deep Fried Garoupa with Sweet & Sour Sauce 95.9

SEAFOOD

- S1 Lobster 45/100g
(choice of butter egg sauce or samrod sauce)
- S2 Signature Deep Fried King Prawn 39.9/pc
(choice of butter egg sauce, black pepper sauce, cashew nut paste or red curry sauce)
- S3 Chakri Crispy Soft-Shell Crab 28.9/pc
(choice of egg curry sauce, garlic sauce sweet and sour sauce or red curry sauce)
- S4 Golden Crab Shell with Minced Meat 19.9/pc
- S5 Crispy Squid with Thai Chili Sauce 32.9
- S6 Stir Fry Squid/Prawn with Salted Egg 32.9
- S7 Thai style Sweet & Sour Shrimp 29.9
- S8 Grilled King Prawn with Lime and Chili Sauce 39.9





Chakri Roasted Duck with Coffee Sauce

POULTRY

- | | | |
|-----------|---|------|
| P1 | Chakri Roasted Duck with Coffee Sauce | 39.9 |
| P2 | Golden Crispy Chicken with Mango Sauce | 32.9 |
| P3 | Traditional Pandan Chicken | 32.9 |
| P4 | Sauteed Chicken with Sauce (choice of cashew nut, basil leaves, black pepper or sweet & sour sauce) | 29.9 |

BEEF DISH

- | | | |
|-----------|-------------------------------------|------|
| B1 | Sizzling/Stir Fry Black Pepper Beef | 34.9 |
| B2 | Stir Fry Beef Basil with Long Bean | 32.9 |
| B3 | Stir Fry Beef with Cashew Nut | 32.9 |





Organic Mixed Vegetables

VEGETABLE

| | | |
|----|---|------|
| V1 | Broccoli Mushroom | 29.9 |
| V2 | Broccoli Mushroom with Scallop | 39.9 |
| V3 | Kailan with Salted Fish | 25.9 |
| V4 | Kangkung with Belacan or Garlic Sauce | 25.9 |
| V5 | Organic Mixed Vegetables | 29.9 |
| V6 | Chakri Petai & Prawn with Belacan Sauce | 32.9 |

OMELETTE

| | | |
|----|---------------------------------|------|
| O1 | Thai Omelette (Crab Meat/Prawn) | 23.9 |
|----|---------------------------------|------|





 Pineapple Fried Rice 

NOODLE & PASTA

| | |
|-------------------------------|------|
| Thai style Fried Glass Noodle | |
| N1 - King Prawn | 39.9 |
| N2 - Soft-Shell Crab | 35.9 |
| N3 - Chicken | 24.9 |
| N4 Phad Thai Noodle | 25.9 |
| N5 Seafood Char Kuey Teow | 22.9 |
| N6 Spaghetti Aglio-Olio | 18.9 |
| N7 Spaghetti Green Curry | 37.9 |

RICE

| | |
|---|------|
| R1 Pineapple Fried Rice | 24.9 |
| R2 Chakri Fried Rice (choice of chicken, prawn, crab or seafood) | 24.9 |
| R3 Fried Rice with Salted Fish | 24.9 |
| R4 Steamed Rice | 5.9 |





❖ Rib Eye Beef Steak ❖

WESTERN

| | |
|--|------|
| W1 Fish and Chips | 27.9 |
| W2 Grilled Salmon with Red Curry Sauce | 35.9 |
| W4 Grilled King Prawn with Lime & Chili Sauce | 35.9 |
| W5 Grilled Chicken with Rice | 27.9 |
| W6 Lamb Chop | 58.9 |
| W7 Rib Eye Beef Steak | 58.9 |





Beef Burger



BURGER & SANDWICH



| | | |
|----|-------------------------|------|
| E1 | Chicken Burger | 25.9 |
| E2 | Beef Burger | 27.9 |
| E3 | Green Curry Beef Burger | 27.9 |

PIZZA

| | | |
|----|--------------|------|
| Z1 | Margherita | 24.9 |
| Z2 | Hawaiian | 30.9 |
| Z3 | Vege Delight | 30.9 |
| Z4 | Green Curry | 30.9 |
| Z5 | Tom Yum | 30.9 |





Red Ruby Water Chestnut

DESSERT

| | | |
|----|------------------------------------|------|
| D1 | Mango Sticky Rice | 19.9 |
| D2 | Durian Sticky Rice | 19.9 |
| D3 | Red Ruby Water Chestnut in Coconut | 18.9 |
| D4 | Ice Cream | 10.9 |
| D5 | Mixed Fruit | 15.9 |



