



  RAIN TREEMY

ala-carte

TAPAS & SNACKS

- T1 TOMATO BRUSHETTA 10.9
- T2 FRENCH FRIES 10.9
- T3 SPICY IKAN BILIS W SAUSAGE  17.9
- T4 DEEP-FRIED CALAMARI  18.9
- T5 SAUTEED PRAWNS W DRIED CHILLIES & HERBS 19.9
- T6 SPICY CHICKEN WINGS 18.9
- T7 CHICKEN QUESADILLAS 18.9
- T8 NACHOS 23.9
- T9 CHICKEN BOXING  18.9

SOUP & SALAD

- S1 GARDEN SALAD 14.9
- S2 CAESAR SALAD 19.9
- S3 MUSHROOM SOUP  17.9
- S4 SEAFOOD SOUP W TOMATO BROTH  21.9
- S5 THAI MANGO SALAD 17.9

PASTA

- P1 SPAGETTI AGLIO OLIO 18.9
- P2 FETTUCINNI CARBONARA 27.9
(CHICKEN HAM/BEEF BACON/MUSHROOM)
- P3 SPAGETTI MARINARA 37.9
- P4 SPAGETTI BOLOGNESE 27.9
- P5 SPAGETTI SOFT-SHELL CRAB  35.9
- P6 BEEF LASAGNA  29.9
- P7 SPAGETTI GREEN CURRY  37.9



PIZZA

- Z1 MARGHERITA 24.9
- Z2 PEPPERONI  29.9
- Z3 HAWAIIAN 30.9
- Z4 SEAFOOD  36.9
- Z5 FOUR SEASON (4 FLAVOURS PIZZA) 36.9
- Z6 VEGE DELIGHT 30.9



Add-Ons

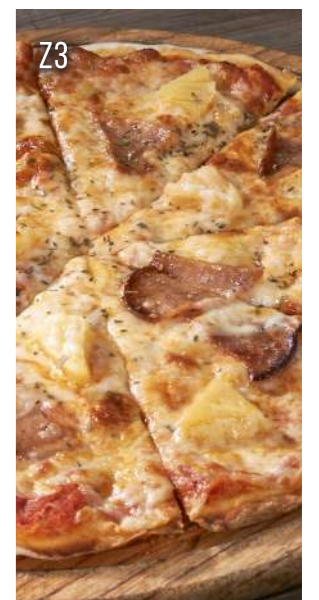
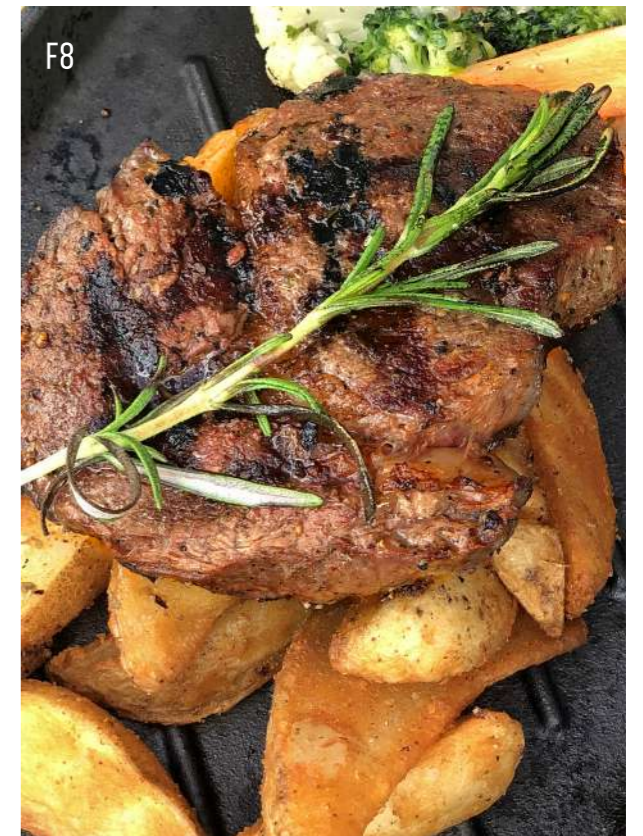
- Cheese 5.9
- Mushroom 4.9
- Chicken 5.9
- Seafood 9.9

MAIN

- F1 FISH & CHIPS 27.9
- F2 GRILLED CHICKEN CHOP  27.9
(SWEET & SOUR/BLACK PEPPER/MUSHROOM)
- F3 GRILLED SALMON 35.9
- F4 LAMB RACK  58.9
- F5 BBQ CHICKEN (HALF) 35.9
- F6 LAMB SHANK 45.9
- F7 RIB EYE 59.9
- F8 SIZZLING RIB EYE W WEDGES & VEGE  54.9
- F9 SIZLING BUTTERMILK CHICKEN W WEDGES & VEGE 29.9
- F10 BBQ SALMON PARCEL W SUMMER VEGE  38.9

BURGER & SANDWICH

- B1 RRAINTREE NACHOS ZINGER BURGER  29.9
- B2 RRAINTREE BEEF BURGER  27.9
- B3 THE CLUB SANDWICH 17.9
- B4 VEGE SANDWICH 15.9





THAI SPECIAL

- H1 MIENG KAM  19.9
- H2 THAI FISH CAKE  19.9
- H3 TOMYAM SEAFOOD  24.9
- H4 PINEAPPLE FRIED RICE 23.9
- H5 PHAD THAI  23.9
- H6 GREEN CURRY CHICKEN  20.9

LOCAL DELIGHT

- L1 SPICY KAMPUNG FRIED RICE  16.9
- L2 NASI LEMAK AYAM BEREMPAH 18.9
- L3 CANTONESE FRIED RICE  18.9
- L4 SEAFOOD CHAR KUEY TEOW 22.9
- L5 CHICKEN MAHARANI  26.9
- L6 RAIN TREE FRIED RICE 29.9
- L7 SIZZLING BBQ TIGER PRAWN W BUTTER RICE  42.9
- L8 STEAMED FRAGRANT RICE 3.9

DESSERT

- D1 CHOCOLATE BROWNIE WITH ICE-CREAM  16.9
- D2 TIRAMISU 16.9
- D3 RED RUBY WATER CHESTNUT  13.9
- D4 RED RUBY SERVED IN THAI COCONUT  18.9
- D5 PREMIUM ICE-CREAM 10.9
(VANILLA/CHOCOLATE/STRAWBERRY/GREEN TEA)
- D6 ICE-CREAM PARFAIT 16.9

